



DEPARTMENT OF ARTS AND EDUCATION

COURSE OUTLINE – WINTER 2018

SO1000 (A3): Introductory Sociology 3 (3-0-0) 45 Hours for 15 Weeks

INSTRUCTOR: René R. Gadacz-Gould, Ph.D **PHONE:** 780.539.2831
OFFICE: C-306 **E-MAIL:** Rgadacz-Gould@gprc.ab.ca
OFFICE HOURS: Daily; by appointment; drop-ins welcome

CALENDAR DESCRIPTION: This course examines the theory, methods, and substance of sociology. How societies and individuals are shaped and modified by culture, socialization, deviance, stratification, group processes, industrialization, and social movements will be covered.

PREREQUISITE(S)/COREQUISITE(S): none

REQUIRED TEXT(S)/RESOURCE MATERIALS: Pearson Custom Sociology: Introduction to Sociology SO 1000 [2017-2018]. Pearson Canada Inc: Boston, MA.

DELIVERY MODE(S): lectures, class discussion, group work, class presentations, written tests, written projects

COURSE OBJECTIVES: students will be introduced to the essential sociological concepts and their historical foundation; learn to understand the reciprocal relation between individual behavior and society; to appreciate the 'sociological imagination' view-point; and be taught to apply the theories and methodologies of sociology as a social science in their everyday lives.

LEARNING OUTCOMES: when faced with personal events/experiences in their private and working lives, or when exposed to current events in society, students will be able

to: identify social-historical forces and patterns at work; see the extent to which their experiences are shared by others; to initiate, participate in, or resist the exercise of power; and be able to distinguish between the latent and manifest consequences of decisions and social actions taken by themselves or by others.

TRANSFERABILITY: UA, UC, AU, UL, AF, CU, CUC, GMU, KUC.

***Warning:** Although we strive to make the transferability information in this document up-to-date and accurate, **the student has the final responsibility for ensuring the transferability of this course to Alberta Colleges and Universities.** Please consult the Alberta Transfer Guide for more information. You may check to ensure the transferability of this course at Alberta Transfer Guide main page <http://www.transferralberta.ca> or, if you do not want to navigate through few links, at <http://alis.alberta.ca/ps/tsp/ta/tbi/onlineSearch.html?SearchMode=S&step=2>

**** Grade of D or D+ may not be acceptable for transfer to other post-secondary institutions. Students are cautioned that it is their responsibility to contact the receiving institutions to ensure transferability**

EVALUATIONS:

Mid-Term Exam (20%).....	February 26
Final Exam (30%).....	TBA
Daily ‘News-You-Can-Use’ Analysis (1 x 10%).....	starts January 15
Assignment #1 (20%).....	TBD (February)
Assignment #2 (20%).....	TBD (March)

The *Mid-Term Exam* (February 26) will consist of multiple-choice questions as will the *Final Exam* (date TBA). Assignments #1 and #2 will be provided on dates to be announced.

PLEASE NOTE:

A missed exam or course component won’t be accommodated *unless* the situation is an unexpected personal or family emergency, and unless you can provide documentation.

Late assignments (or any applicable assignment/course component) will result in an automatic deduction of 5% PER DAY, up to and including the day of a late submission, unless arrangements based on extenuating circumstances have been made. Only legitimately documented personal or family emergencies will be accommodated. Example: if an assignment is worth 20%, one late day makes it worth 15%, and so on. Forgetfulness or poor planning won't be accommodated.

What the semester course work entails will be discussed on the first day of classes. **Students will work with a partner for the News-You-Can-Use presentation.**

In regards to the Assignments, students have the option of working alone or working with one other partner (they will share the mark for the assignments).

GRADING CRITERIA:

Please note that most universities will not accept your course for transfer credit **IF** your grade is **less than C-**.

Alpha Grade	4-point Equivalent	Percentage Guidelines	Alpha Grade	4-point Equivalent	Percentage Guidelines
A+	4.0	91-100	C+	2.3	67-69
A	4.0	86-90	C	2.0	63-66
A-	3.7	81-85	C-	1.7	60-62
B+	3.3	76-80	D+	1.3	55-59
B	3.0	73-75	D	1.0	50-54
B-	2.7	70-72	F	0.0	00-49

COURSE SCHEDULE/TENTATIVE TIMELINE:

January 5 - Outlines; course requirements, brief organizational meeting...

January 8, 12 – *Pearson Custom Text*, Chapter 1: Introduction to an analytical model for the study of society and the sociological perspective

January **15, 19** – Chapter 1, continued; Chapter 2: research methodology in sociology and the social sciences **'News You Can Use' begins on the 15th**

January 22, 26 – Chapter 2, continued; Chapter 3: culture, ‘the ‘content’ of society

January 29, February 2 – Chapter 3, continued; Chapter 4: society, ‘the framework’ for our behaviors and actions; Chapter 5: socialization, ‘learning’ our behaviors and actions

February 5, 9 – Chapter 5, continued... ; Chapter 6: deviance, ‘alternative’ behaviors and actions?

February 12, 16 – Chapter 6: deviance, cont’d...

February **19, 23 – Family Day and Reading; no classes**

February **26, March 2 – Mid-Term Exam, Monday the 26th**

March 5, 9 – Chapter 6, continued; Chapter 7: groups and organizations, ‘social organization as soft technology’

March 12, 16 – Chapter 7, continued; Chapter 8: family, society’s ‘primary organization’

March 19, 23 – Chapter 8, continued; Chapter 9: social stratification, inequality, class structure, and differential opportunities

March 26, **30** – Chapter 9, continued; Chapter 10: race and ethnicity, fundamental human differences, and human rights **Good Friday on 30th – no classes**

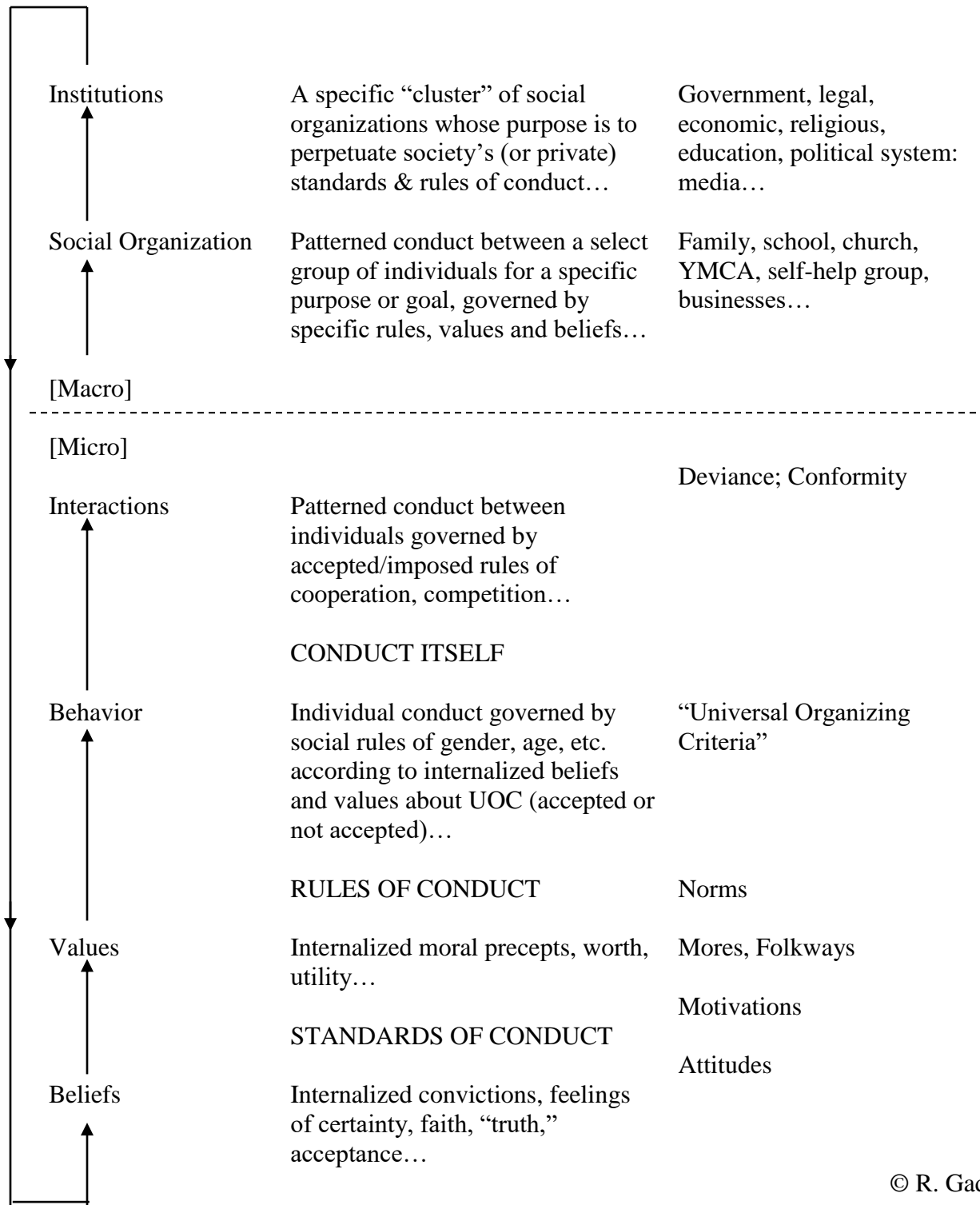
April 2, 6 – Chapter 10, continued, Chapter 11: social change, society in transition

April 9, 13 – catch-up, wrap-up, and review **Final Exam date TBA**

[Classes end Friday April 13, 2018]

GENERAL SCHEME OF SOCIETY

“The Social System”



© R. Gadacz-Gould

STUDENT RESPONSIBILITIES:

Attendance at lectures is strongly encouraged, as is your participation in class discussions.

Six Ways To Make This Course More Valuable:

- 1. Participate, to engage your learning**
- 2. Question, to enhance your learning**
- 3. Read, to expand your learning**
- 4. Reflect, to measure your learning**
- 5. Apply, to transfer your learning**
- 6. Innovate, to adapt your learning**

STATEMENT ON PLAGIARISM AND CHEATING:

Cheating and plagiarism will not be tolerated and there will be penalties. For a more precise definition of plagiarism and its consequences, refer to the Student Conduct section of the College Calendar at <http://www.gprc.ab.ca/programs/calendar/> or the College Policy on Student Misconduct: Plagiarism and Cheating at <https://www.gprc.ab.ca/about/administration/policies>

Instructors reserve the right to use electronic plagiarism detection services on written assignments. **Instructors also reserve the right to ban the use of any form of electronics (cell phones, Blackberries, iPods, tablets, scanning pens, electronic dictionaries, etc.) during class and during exams.**

**Note: all Academic and Administrative policies are available on the same page.