



DEPARTMENT OF ARTS AND EDUCATION

COURSE OUTLINE – WINTER 2019

SO1000 (A3): Introductory Sociology - 3 (3-0-0) 45 Hours for 15 Weeks

INSTRUCTOR: René R. Gadacz-Gould, **PHONE:** 780.539.2831
Ph.D

OFFICE: C-306 **E-MAIL:** rgadacz-gould@gprc.ab.ca

OFFICE HOURS: Daily; by appointment; drop-ins welcome

PREREQUISITE(S)/COREQUISITE(S): none

REQUIRED TEXT(S)/RESOURCE MATERIALS: Pearson Custom Sociology: Introduction to Sociology SO 1000 [2018 – 2019]. Pearson Canada: Boston, MA.

CALENDAR DESCRIPTION: This course examines the theory, methods, and substance of sociology. How societies and individuals are shaped and modified by culture, socialization, deviance, stratification, group processes, industrialization, and social movements will be covered.

DELIVERY MODE(S): lectures, class discussion, group work, class presentations, written tests, written projects

COURSE OBJECTIVES: students will be introduced to the essential sociological concepts and their historical foundation; learn to understand the reciprocal relation between individual behavior and society; to appreciate the 'sociological imagination' view-point; and be taught to apply the theories and methodologies of sociology as a social science in their everyday lives.

LEARNING OUTCOMES: when faced with personal events/experiences in their private and working lives, or when exposed to current events in society, students will be able to: identify social-historical forces and patterns at work; see the extent to which their experiences are shared by others; to initiate, participate in, or resist the exercise of power; and be able to distinguish between the latent and manifest consequences of decisions and social actions taken by themselves or by others.

TRANSFERABILITY: UA, UC, AU, UL, AF, CU, CUC, GMU, KUC

***Warning:** Although we strive to make the transferability information in this document up-to-date and accurate, **the student has the final responsibility for ensuring the transferability of this course to Alberta Colleges and Universities.** Please consult the Alberta Transfer Guide for more information. You may check to ensure the transferability of this course at Alberta Transfer Guide at <http://transferalberta.alberta.ca/transfer-alberta-search/#/audienceTypeStep>

**** Grade of D or D+ may not be acceptable for transfer to other post-secondary institutions. Students are cautioned that it is their responsibility to contact the receiving institutions to ensure transferability.**

EVALUATIONS:

Mid-Term Exam (20%).....	February 25
Final Exam (30%).....	TBA
Daily 'News-You-Can-Use' Analysis (1 x 10%).....	starts January 14
Assignment #1 (20%).....	TBD (February)
Assignment #2 (20%).....	TBD (March)

GRADING CRITERIA:

Please note that most universities will not accept your course for transfer credit **IF** your grade is **less than C-**.

Alpha Grade	4-point Equivalent	Percentage Guidelines	Alpha Grade	4-point Equivalent	Percentage Guidelines
A+	4.0	91-100	C+	2.3	67-69
A	4.0	86-90	C	2.0	63-66
A-	3.7	81-85	C-	1.7	60-62
B+	3.3	76-80	D+	1.3	55-59
B	3.0	73-75	D	1.0	50-54
B-	2.7	70-72	F	0.0	00-49

COURSE SCHEDULE/TENTATIVE TIMELINE:

January 4 - Outlines; course requirements, brief organizational meeting...

January 7, 11 – *Pearson Custom Text*, Chapter 1: Introduction to an analytical model for the study of society and the sociological perspective

January 14, 18 – Chapter 1, continued; Chapter 2: research methodology in sociology and the social sciences **'News-You-Can-Use' begins on the 14th**

January 21, 25 – Chapter 2, continued; Chapter 3: culture, 'the 'content' of society

January 28, February 1 – Chapter 3, continued; Chapter 4: society, 'the framework' for our behaviors and actions; Chapter 5: socialization, 'learning' our behaviors and actions

February 4, 8 – Chapter 5, continued... ; Chapter 6: deviance, 'alternative' behaviors and actions?

February 11, 15 – Chapter 6: deviance, cont'd...

February 18, 19-22 – **Family Day and Reading Break; no classes**

February 25, March 1 – **Mid-Term Exam, Monday the 25th**

March 4, 8 – Chapter 6, continued; Chapter 7: groups and organizations, 'social organization as soft technology'

March 11, 15 – Chapter 7, continued; Chapter 8: family, society's 'primary organization'

March 18, 22 – Chapter 8, continued; Chapter 9: social stratification, inequality, class structure, and differential opportunities

March 25, 29 – Chapter 9, continued; Chapter 10: social class in Canada

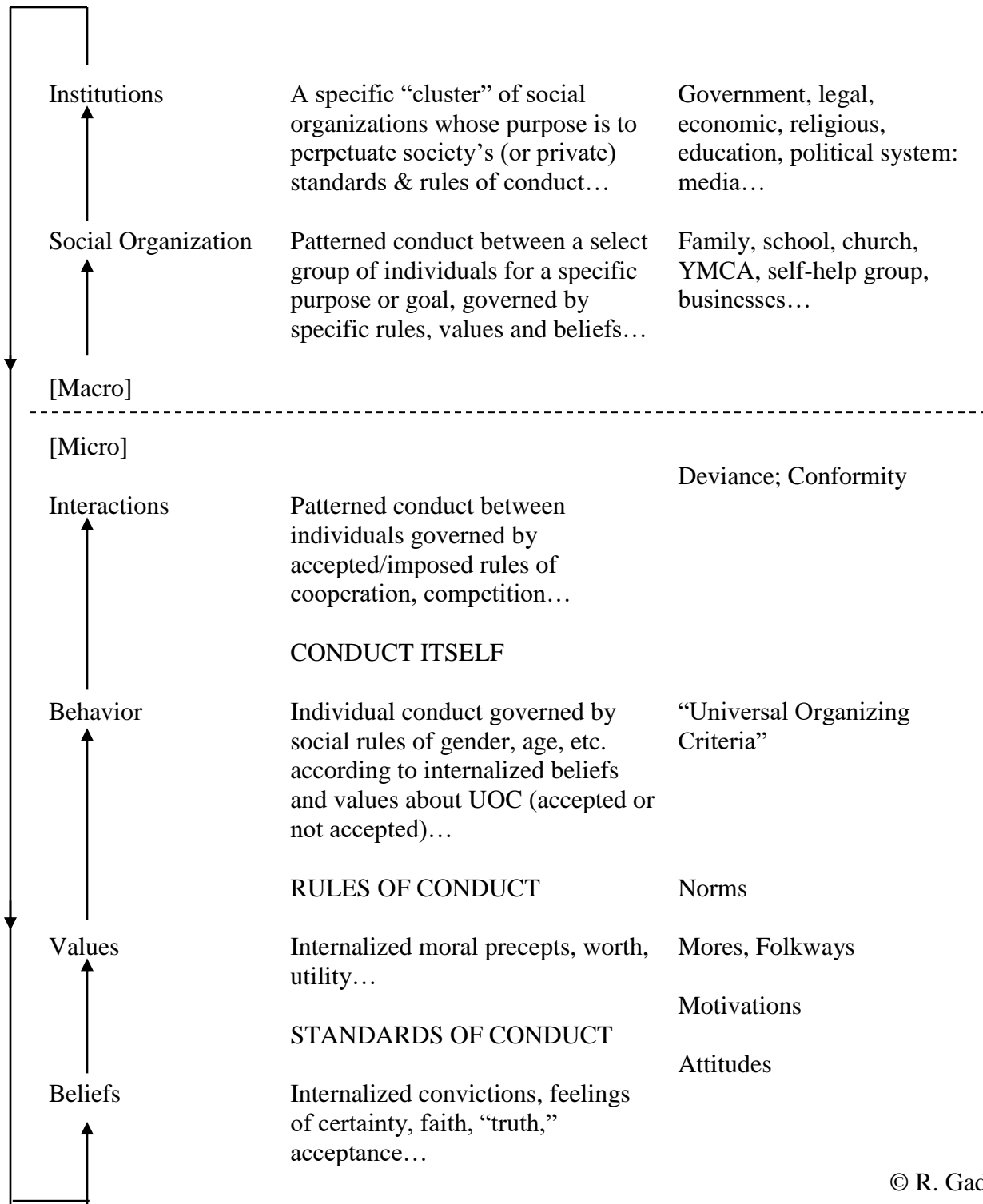
April 1, 5 – Chapter 10, continued; Chapter 11: race and ethnicity

April 8, 12 – Chapter 11, continued; Chapter 12: social change, society in transition

[Classes end Friday April 12, 2019 – **Final Exam date TBA**]

GENERAL SCHEME OF SOCIETY

“The Social System”



© R. Gadacz-Gould

STUDENT RESPONSIBILITIES:

The *Mid-Term Exam* (February 25) will consist of multiple-choice questions as will the *Final Exam* (date TBA). Assignments #1 and #2 will be provided on dates to be announced.

ATTENDANCE AND EXAM POLICIES:

Attendance at lectures is strongly encouraged, as is your participation in class discussions.

PLEASE NOTE:

A missed exam or course component won't be accommodated *unless* the situation is an unexpected personal or family emergency, and unless you can provide documentation.

Late assignments (or any applicable assignment/course component) will result in an automatic deduction of 5% PER DAY, up to and including the day of a late submission, unless arrangements based on extenuating circumstances have been made. Only legitimately documented personal or family emergencies will be accommodated. Example: if an assignment is worth 20%, one late day makes it worth 15%, and so on. Forgetfulness or poor planning won't be accommodated.

What the semester course work entails will be discussed on the first day of classes. **Students will work with a partner for the News-You-Can-Use presentation.**

In regards to the Assignments, students have the option of working alone or working with one other partner (they will share the mark for the assignments).

Six Ways To Make This Course More Valuable:

- 1. Participate, to engage your learning**
- 2. Question, to enhance your learning**
- 3. Read, to expand your learning**
- 4. Reflect, to measure your learning**
- 5. Apply, to transfer your learning**
- 6. Innovate, to adapt your learning**

STATEMENT ON PLAGIARISM AND CHEATING:

Cheating and plagiarism will not be tolerated and there will be penalties. For a more precise definition of plagiarism and its consequences, refer to the section on Plagiarism and Cheating in the College policy titled Student Misconduct: Academic and Non-Academic at <https://www.gprc.ab.ca/about/administration/policies/fetch.php?ID=68>).

Instructors reserve the right to use electronic plagiarism detection services on written assignments. **Instructors also reserve the right to ban the use of any form of electronics (cell phones, Blackberries, iPods, tablets, scanning pens, electronic dictionaries, etc.) during class and during exams.**

**Note: all Academic and Administrative policies are available at <https://www.gprc.ab.ca/about/administration/policies/>