



DEPARTMENT OF ARTS AND EDUCATION

COURSE OUTLINE – WINTER SEMESTER 2020

SO 1000 (A3; V/C) – Introductory Sociology 3 (3-0-0) UT 45 Hrs.

INSTRUCTOR: René R. Gadacz-
Gould, Ph.D

PHONE: 780.539.2831

OFFICE: C-306

E-MAIL: rgadacz-gould@gprc.ab.ca

OFFICE HOURS: Daily; by appointment; drop-ins welcome

PREREQUISITE(S)/COREQUISITE(S): none

REQUIRED TEXT(S)/RESOURCE MATERIALS: Pearson Custom Sociology: Introduction to Sociology SO 1000 [2020]. Pearson Canada: Boston, MA.; J. Nagle, 2016, Sociology: A Graphic Guide. Icon Books.

CALENDAR DESCRIPTION: This course examines the theory, methods, and substance of sociology. How societies and individuals are shaped and modified by culture, socialization, deviance, stratification, group processes, industrialization, and social movements will be covered.

CREDIT/CONTACT HOURS: 3 (3-0-0) UT 45 hours

DELIVERY MODE(S): lectures, class discussion, group work, class presentations, written tests, written projects

COURSE OBJECTIVES: students will be introduced to the essential sociological concepts and their historical foundation; learn to understand the reciprocal relation between individual behavior and society; to appreciate the 'sociological imagination'

view-point; and be taught to apply the theories and methodologies of sociology as a social science in their everyday lives.

LEARNING OUTCOMES: when faced with personal events/experiences in their private and working lives, or when exposed to current events in society, students will be able to: identify social-historical forces and patterns at work; see the extent to which their experiences are shared by others; to initiate, participate in, or resist the exercise of power; and be able to distinguish between the latent and manifest consequences of decisions and social actions taken by themselves or by others.

TRANSFERABILITY: Transfers to: UA, UC, AU, UL, AF, CU, CUC, GMU, KUC.
Grade of D or D+ may not be acceptable for transfer to other post-secondary institutions.

STATEMENT ON PLAGIARISM AND CHEATING:

Please refer to the College Policy on Student Misconduct: Plagiarism and Cheating at – www.gprc.ab.ca/about/administration/policies/

GRADING CRITERIA:

GRANDE PRAIRIE REGIONAL COLLEGE			
GRADING CONVERSION CHART			
Alpha Grade	4-point Equivalent	Percentage Guidelines	Designation
A ⁺	4.0	91 – 100	EXCELLENT
A	4.0	86 – 90	
A ⁻	3.7	81 – 85	FIRST CLASS STANDING
B ⁺	3.3	77 – 80	
B	3.0	73 – 76	GOOD
B ⁻	2.7	69 – 72	
C ⁺	2.3	66 – 68	SATISFACTORY
C	2.0	63 – 65	
C ⁻	1.7	60 – 62	
D ⁺	1.3	55 – 59	MINIMAL PASS
D	1.0	50 – 54	
F	0.0	0 – 49	FAIL
WF	0.0	0	FAIL, withdrawal after the deadline

EVALUATIONS:

- Mid-Term Exam (20%)..... February 24
- Final Exam (30%)..... TBA
- Daily End-of-Chapter Question (1 x 10%)..... **starts** January 17
- Assignment #1 (20%)..... TBD (Jan/Feb)
- Assignment #2 (20%)..... TBD (March)

STUDENT RESPONSIBILITIES:

1. The **Mid-Term Exam** (20%, February 24) will consist of multiple-choice questions as will the **Final Exam** (30%, date TBA).

2. The **daily** 'End-of-Chapter Question' is where a group of **2** students will select **one question** from the section called 'Seeing Sociology in *Your* Everyday Life' **or** the section 'Making the Grade' at *the back of each chapter* (our 'Intro to Sociology Custom Text') and present their responses at the beginning of each class (approx. 10 minutes, including questions and discussion). *Stay with the chapter we are currently on – there are lots of questions to choose from.* **Hello: Many students in the past have chosen to present the Question using PowerPoint slides, which is very effective, but it is a choice.** You must then submit the printed slides *or* the written response (1-2 pages max) to the question you answered *on the day of your presentation*, and must include a title page with your names, date, and course I.D. Please work cooperatively with your presentation partner, as you will be sharing the mark (10%).

3. Details on **Assignments #1** (20%) and **#2** (20%) to be announced in due course. Students have the option of working alone or working with one other partner (they will share the mark for the assignments).

ATTENDANCE AND EXAM POLICIES:

Attendance at lectures is strongly encouraged, as is your participation in class discussions.

PLEASE NOTE:

A missed exam or course component won't be accommodated *unless* the situation is an unexpected personal or family emergency (for which you should provide documentation).

Late assignments (or any applicable assignment/course component) will result in an automatic deduction of 5% PER DAY INCLUDING WEEKENDS, up to and including the day of a late submission, unless arrangements based on extenuating circumstances have been made. Only legitimately documented personal or family emergencies will

be accommodated. Example: if an assignment is worth 20%, one late day makes it worth 15%, and so on. Forgetfulness or poor planning won't be accommodated.

COURSE SCHEDULE/TENTATIVE TIMELINE - Winter 2020

January 6, 10 – Outlines; course requirements; *Pearson Custom Text*, Chapter 1: Introduction to an analytical model for the study of society and the sociological perspective

January 13, 17 – Chapter 1, continued; Chapter 2: research methodology in sociology and the social sciences **End-of-Chapter Question *begins* on the 17th**

January 20, 24 – Chapter 2, continued; Chapter 3: culture, 'the 'content' of society

January 27, 31 – Chapter 3, continued; Chapter 4: society, 'the framework' for our behaviors and actions; Chapter 5: socialization, 'learning' our behaviors and actions

February 3, 7 – Chapter 5, continued; Chapter 6: deviance, 'alternative' behaviors and actions?

February 10, 14 – Chapter 6: deviance, cont'd...

February 17, 21 – **Family Day and Reading Break; no classes this week**

February 24, 28 – **Mid-Term Exam, Monday the 24th**

March 2, 6 – Chapter 6, continued; Chapter 7: groups and organizations, 'social organization as soft technology'

March 9, 13 – Chapter 7, continued; Chapter 8: family, society's 'primary organization'

March 16, 20 – Chapter 8, continued; Chapter 9: social stratification, inequality, class structure, and differential opportunities

March 23, 27 – Chapter 9, continued; Chapter 10: social class in Canada

March 30, April 3 –

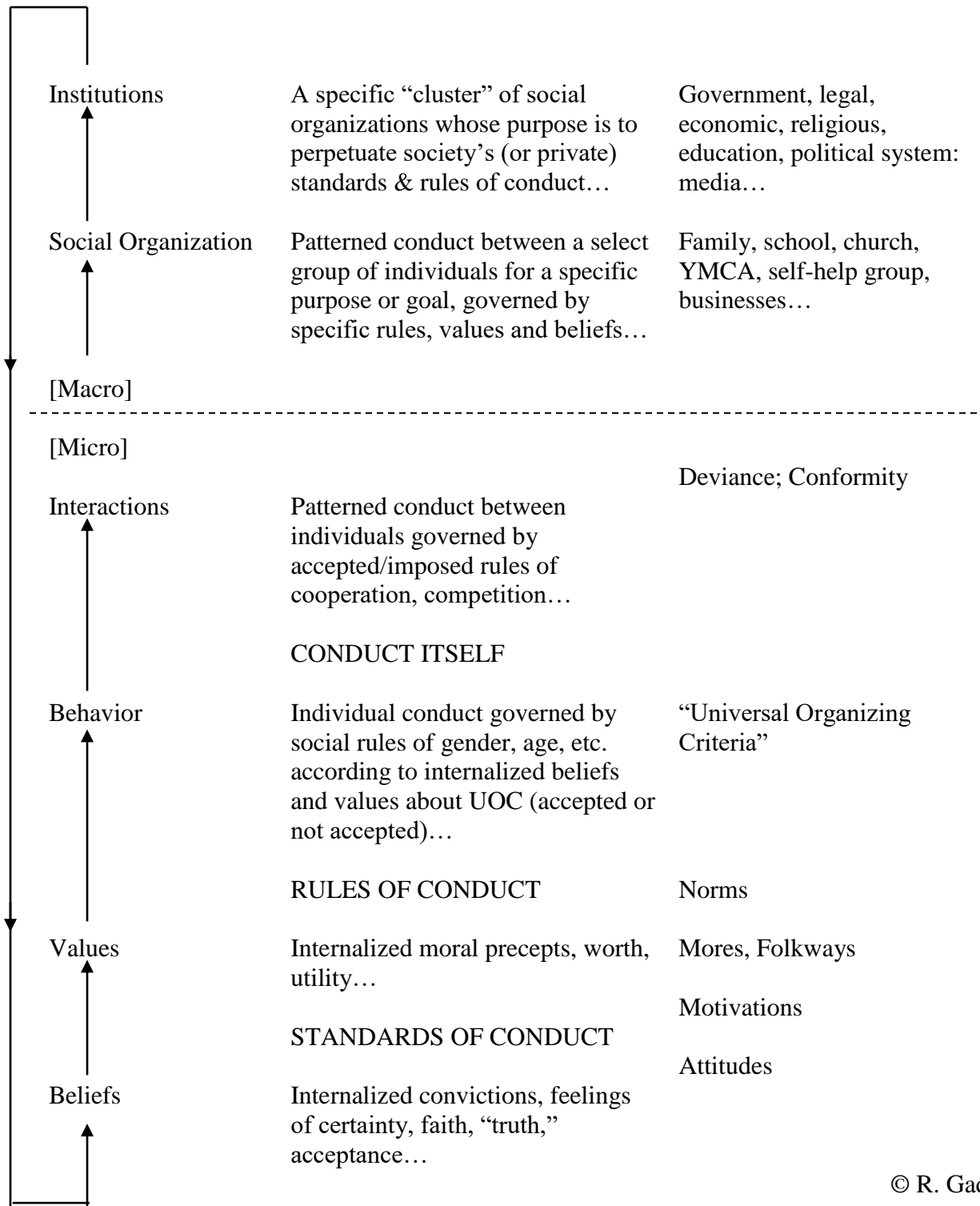
April 6, **10** – Chapter 10, continued; Chapter 11: race and ethnicity **No classes on Good Friday, the 10th**

April 13 – Chapter 11, continued; Chapter 12: social change, society in transition

[Classes end Monday April 13, 2020 – **Final Exam date TBA**]

GENERAL SCHEME OF SOCIETY

“The Social System”



© R. Gadacz-Gould

Six Ways To Make This Course More Valuable:

- 1. Participate, to engage your learning**
- 2. Question, to enhance your learning**
- 3. Read, to expand your learning**
- 4. Reflect, to measure your learning**
- 5. Apply, to transfer your learning**
- 6. Innovate, to adapt your learning**