



DEPARTMENT OF ARTS AND EDUCATION

COURSE OUTLINE – FALL SEMESTER 2012

SO 1000 (B2) – Introductory Sociology

INSTRUCTOR: René R. Gadacz, Ph.D **PHONE:** 780.539.2831
OFFICE: C-216 **E-MAIL:** rgadacz@gprc.ab.ca

OFFICE HOURS: Daily; by appointment; drop-ins especially welcome

PREREQUISITE(S)/COREQUISITE(S): none

REQUIRED TEXT(S)/RESOURCE MATERIALS: John Steckley & Guy Letts, 2010 (2nd ed.), Elements of Sociology: A Critical Canadian Introduction. Oxford: Don Mills.

CALENDAR DESCRIPTION: This course examines the theory, methods, and substance of sociology. How societies and individuals are shaped and modified by culture, socialization, deviance, stratification, group processes, industrialization, and social movements will be covered.

CREDIT/CONTACT HOURS: (3-0-0) UT 45 hours

DELIVERY MODE(S): lectures, class discussion, group work, class presentations, written tests, written projects

OBJECTIVES: students will be able to identify essential sociological concepts and their historical foundation, understand the relation between individual behavior and society, appreciate the 'sociological imagination', understand the theories and methodologies of sociology as a social science (the research process).

TRANSFERABILITY: Grade of D or D+ may not be acceptable for transfer to other post-secondary institutions. Transfers to: U of A, UC, AU, UL, AF, CU, CUC, KUC.

STATEMENT ON PLAGIARISM AND CHEATING:

Please refer to the College Policy on Student Misconduct: Plagiarism and Cheating at www.gprc.ab.ca/about/administration/policies/

GRADING CRITERIA:

GRANDE PRAIRIE REGIONAL COLLEGE			
GRADING CONVERSION CHART			
Alpha Grade	4-point Equivalent	Percentage Guidelines	Designation
A⁺	4.0	95 – 100	EXCELLENT
A	4.0	85 – 94	
A⁻	3.7	80 – 84	FIRST CLASS STANDING
B⁺	3.3	76 – 79	
B	3.0	73 – 75	GOOD
B⁻	2.7	70 – 72	
C⁺	2.3	67 – 69	SATISFACTORY
C	2.0	63 – 66	
C⁻	1.7	60 – 62	
D⁺	1.3	55 – 59	MINIMAL PASS
D	1.0	50 – 54	
F	0.0	0 – 49	FAIL
WF	0.0	0	FAIL, withdrawal after the deadline

EVALUATIONS:

Term Test #1 (20 points).....	October 12th
Term Test #2 (20 points).....	November 5th
Term Test #3 (20 points).....	December 10th
Check-Up-From-the-Neck-Up Pop Quiz (10 points)..	anytime 😊
Questions for Critical Review (1 x 10 points).....	starts September 14th
Daily Group Current Events Presentations (1 x 10)...	starts September 14th
Written assignments (3 x 20 points = 60 points).....	deadlines TBA

[Total points are 150; your total points will be converted to a percent (%) grade to determine your letter grade. For example, $110/150 = 73/100 = 73\% = B$]

STUDENT RESPONSIBILITIES:

(1) Tests (60 points) consist of multiple choice questions, true-and-false, and/or glossary terms/concepts (short answers) -- based on all lecture and text materials. **Note that there is no final exam.** **(2)** Details on the **written assignments (60 points)** will be discussed early in the semester and deadline dates will be announced when the assignments are given. For these assignments, you have the option of working with a partner, and you will share the marks. **(3)** What the **'current events/media presentations,'** and chapter **'questions for critical review'** entail (20 points of your course grade) will be discussed in detail as classes get underway. For these presentations (current events; chapter questions) you will work with a class partner and share the marks. *Other details and due dates will be announced both in class and on Moodle.*

PLEASE NOTE:

🚨 **A missed exam unfortunately cannot be accommodated - *unless* the situation is an unexpected personal or family emergency. No make-up exams unless it's an emergency.**

Plagiarism detection software may be used in this course, and students may be required, individually or collectively, to submit key assignments/components in electronic form.

It is your responsibility to ensure that all your work is at a level appropriate to your year in college/university studies. Always spell- and grammar-check your work; always keep a hard copy or disk copy of your work as back-up. There is writing help on campus, and if in doubt you are always welcome to ask me, your instructor, for clarification. Poor spelling, grammar and organization interferes with the clear communication of ideas and you *will* lose marks if your over-all communication is ineffective.

Attendance at lectures is strongly encouraged; the same applies to your participation in class discussions. ***Be an active participant in your education!***

Late assignments (or any applicable assignment/course components) will result in an automatic loss of 5 marks (of the value of the work) PER DAY, up to and including the day of a late submission, unless immediate or prior arrangements, based on exceptional circumstances, have been made. Documented personal or family emergencies, of course, will be accommodated.

COURSE SCHEDULE/TENTATIVE TIMELINE:

Week of (Fall 2012):

September 7 – Outlines; course requirements; brief organizational meeting

September 10, 14 – Steckley, et. al, Chapter 1: Introduction to an analytical model for the study of society; theories in sociology

September 17, 21 – Steckley, et. al, Chapter 1 continued; Chapter 2: Research methods

September 24, 28 – Steckley, et. al, Chapter 3: Culture

October 1, 5 – Steckley, et. al, Chapter 4: Socialization

October **8, 12** – Steckley, et. al, Chapter 5: Roles, Interactions, Organizations

no classes on Monday October 8th – Thanksgiving; **TERM TEST #1 ON FRIDAY THE**

12th

October 15, 19 – Steckley, et. al, Chapter 5 continued; Chapter 6: Deviance

October 22, 26 – Cont'd: Steckley, et. al. Chapter 7: Family

October 29, November 2 – Steckley, et. al., Chapter 8: Religion

November **5, 9** – Steckley, et. al, Chapter 9: Education **TERM TEST #2 ON MONDAY**

THE 5th; no classes on Friday the 9th – Remembrance Day and Fall Break

November **12, 16** – Steckley, et. al, Chapter 9 continued; Chapter 10:

Health/Medicine No classes on Monday the 12th – Remembrance Day and Fall Break

November 19, 23 – Steckley, et. al, Chapter 10 continued; Chapter 11: Social Inequality & Stratification

November 26, 30 – Cont'd: Chapter 11 continued; Chapter 12: Race & Ethnicity; Chapter 13: Gender & Sexuality

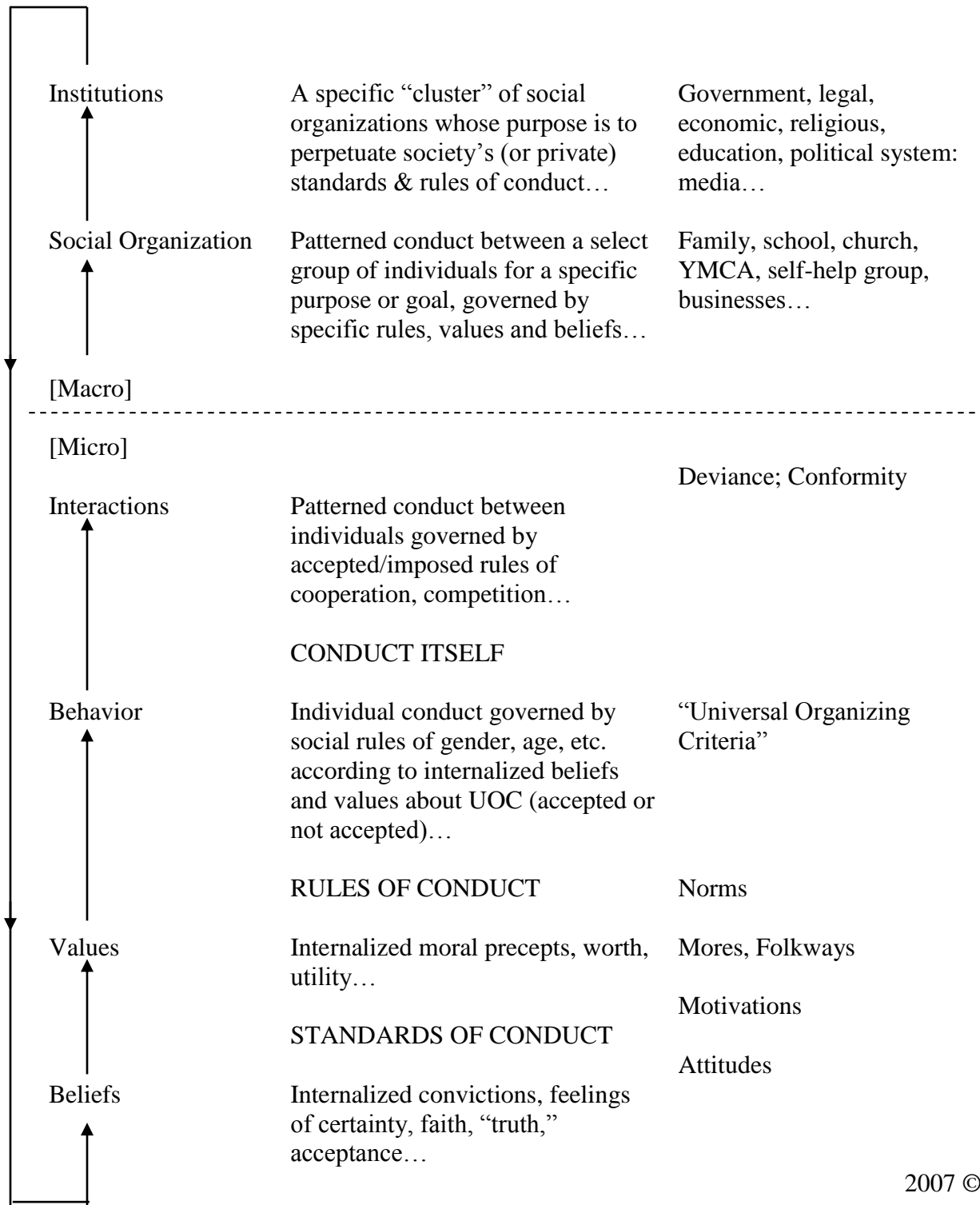
December 3, 7 – Steckley, et. al., Chapter 12, 13 continued; Chapter 14: Social Change

December **10** – **TERM TEST #3 on Monday the 10th**

[Classes end Tuesday, December 11, 2012]

GENERAL SCHEME OF SOCIETY

“The Social System”



2007 © R. Gadacz

Six Ways To Make This Course More Valuable:

- 1. Participate, to engage your learning**
- 2. Question, to enhance your learning**
- 3. Read, to expand your learning**
- 4. Reflect, to measure your learning**
- 5. Apply, to transfer your learning**
- 6. Innovate, to adapt your learning**