



DEPARTMENT OF ARTS AND EDUCATION

COURSE OUTLINE – FALL 2014

SO1000 (B2) – Introductory Sociology - 3 (3-0-0) 45 Hours

INSTRUCTOR: René R. Gadacz, Ph.D **PHONE:** 780.539.2831
OFFICE: C-306 **E-MAIL:** rgadacz@gprc.ab.ca

OFFICE HOURS: Daily; by appointment; drop-ins especially welcome

PREREQUISITE(S)/COREQUISITE(S): none

REQUIRED TEXT(S)/RESOURCE MATERIALS: Pearson Custom Sociology: Introduction to Sociology SO 1000 Fall 2014/Winter 2015. Pearson Canada Inc: Boston, MA.

CALENDAR DESCRIPTION: This course examines the theory, methods, and substance of sociology. How societies and individuals are shaped and modified by culture, socialization, deviance, stratification, group processes, industrialization, and social movements will be covered.

CREDIT/CONTACT HOURS: 3 credits / 3 hours per week

DELIVERY MODE(S): lectures, class discussion, group work, class presentations, written tests, written projects

OUTCOMES: students will be able to identify essential sociological concepts and their historical foundation, understand the relation between individual behavior and society, appreciate the 'sociological imagination', understand the theories and methodologies of sociology as a social science (the research process).

TRANSFERABILITY: Grade of D or D+ may not be acceptable for transfer to other post-secondary institutions. Transfers to: U of A, UC, AU, UL, AF, CU, CUC, KUC.

STATEMENT ON PLAGIARISM AND CHEATING:

Please refer to the College Policy on Student Misconduct: Plagiarism and Cheating at www.gprc.ab.ca/about/administration/policies/

GRADING CRITERIA:

GRANDE PRAIRIE REGIONAL COLLEGE			
GRADING CONVERSION CHART			
Alpha Grade	4-point Equivalent	Percentage Guidelines	Designation
A⁺	4.0	95 – 100	EXCELLENT
A	4.0	85 – 94	
A⁻	3.7	80 – 84	FIRST CLASS STANDING
B⁺	3.3	76 – 79	
B	3.0	73 – 75	GOOD
B⁻	2.7	70 – 72	
C⁺	2.3	67 – 69	SATISFACTORY
C	2.0	63 – 66	
C⁻	1.7	60 – 62	
D⁺	1.3	55 – 59	MINIMAL PASS
D	1.0	50 – 54	
F	0.0	0 – 49	FAIL
WF	0.0	0	FAIL, withdrawal after the deadline

EVALUATIONS:

Term Test #1 (10%).....	October 6th
Term Test #2 (10%).....	November 7th
Final Exam (30%).....	TBA
<u>Term Work:</u>	
'News You Can Use' Presentations (1 x 10%)....	starts September 15th
Written assignments (2 x 20%).....	deadlines TBA

[Total points are 140; your total points will be converted to a percent (%) grade to determine your letter grade. For example, $110/140 = 78/100 = 78\% = B+$]

STUDENT RESPONSIBILITIES:

(1) Tests and exams consist of multiple choice questions, true-and-false, and/or glossary terms/concepts (short answers) -- based on all lecture and text materials. **(2)** Details on the **written assignments** will be discussed early in the semester and deadline dates will be announced when the assignments are given. For these assignments, you have the option of working with a partner, and you will share the marks. **(3)** What the **'News You Can Use' presentations** entail will be discussed in detail as classes get underway. *For these presentations you will work with a class partner and share the marks. Other details and due dates will be announced both in class and on Moodle.*

PLEASE NOTE:

☛ **A missed exam unfortunately cannot be accommodated - *unless* the situation is an unexpected personal or family emergency. No make-up exams unless it's an emergency.**

Plagiarism detection software may be used in this course, and students may be required, individually or collectively, to submit key assignments/components in electronic form.

It is your responsibility to ensure that all your work is at a level appropriate to your year in college/university studies. Always spell- and grammar-check your work; always keep a hard copy or disk copy of your work as back-up. There is writing help on campus, and if in doubt you are always welcome to ask me, your instructor, for clarification. Poor spelling, grammar and organization interferes with the clear communication of ideas and you *will* lose marks if your over-all communication is ineffective.

Attendance at lectures is strongly encouraged; the same applies to your participation in class discussions. ***Be an active participant in your education!***

Late assignments (or any applicable assignment/course components) will result in an automatic loss of 5 marks (of the value of the work) PER DAY, up to and including the day of a late submission, unless immediate or prior arrangements, based on exceptional circumstances, have been made. Documented personal or family emergencies, of course, will be accommodated.

COURSE SCHEDULE/TENTATIVE TIMELINE:

Week of (Fall 2014): *Note: all Chapter numbers refer to the Pearson Custom Text (SO 1000 Fall 2014, Winter 2015) compiled for use in this course.*

September 5 – Outlines; course requirements; brief organizational meeting

September 8, 12 – *Custom Text*, Chapter 1: Introduction to an analytical model for the study of society & the sociological perspective

September 15, 19 – Chapter 1, continued; Chapter 2: research methodology in sociology and the social sciences

September 22, 26 – Chapter 2, continued; Chapter 3: culture, the ‘content’ of society

September 29, October 3 – Chapter 3, continued; Chapter 4: society, the ‘framework’ for our behaviors and actions

October 6, 10 – Chapter 4, continued. **TERM TEST #1 ON MONDAY THE 6th**

October 13, 17 – Chapter 5: socialization, ‘learning’ our behaviors and actions
no classes on Monday October 13th – Thanksgiving

October 20, 24 – Chapter 5, continued; Chapter 6: deviance, ‘alternative’ behaviors
and actions?

October 27, October 31 – Chapter 6, continued.

November 3, 7 – **TERM TEST #2 ON FRIDAY THE 7th**

November 10, 14 – Chapter 7: groups and organizations, ‘social organization as soft
technology’ **No classes on Monday the 10th – Remembrance Day/Fall Break**

November 17, 21 – Chapter 7, continued; Chapter 8: family, society’s ‘primary
organization’

November 24, 28 – Chapter 8, continued, Chapter 9: social stratification, inequality,
class structure, and different opportunities

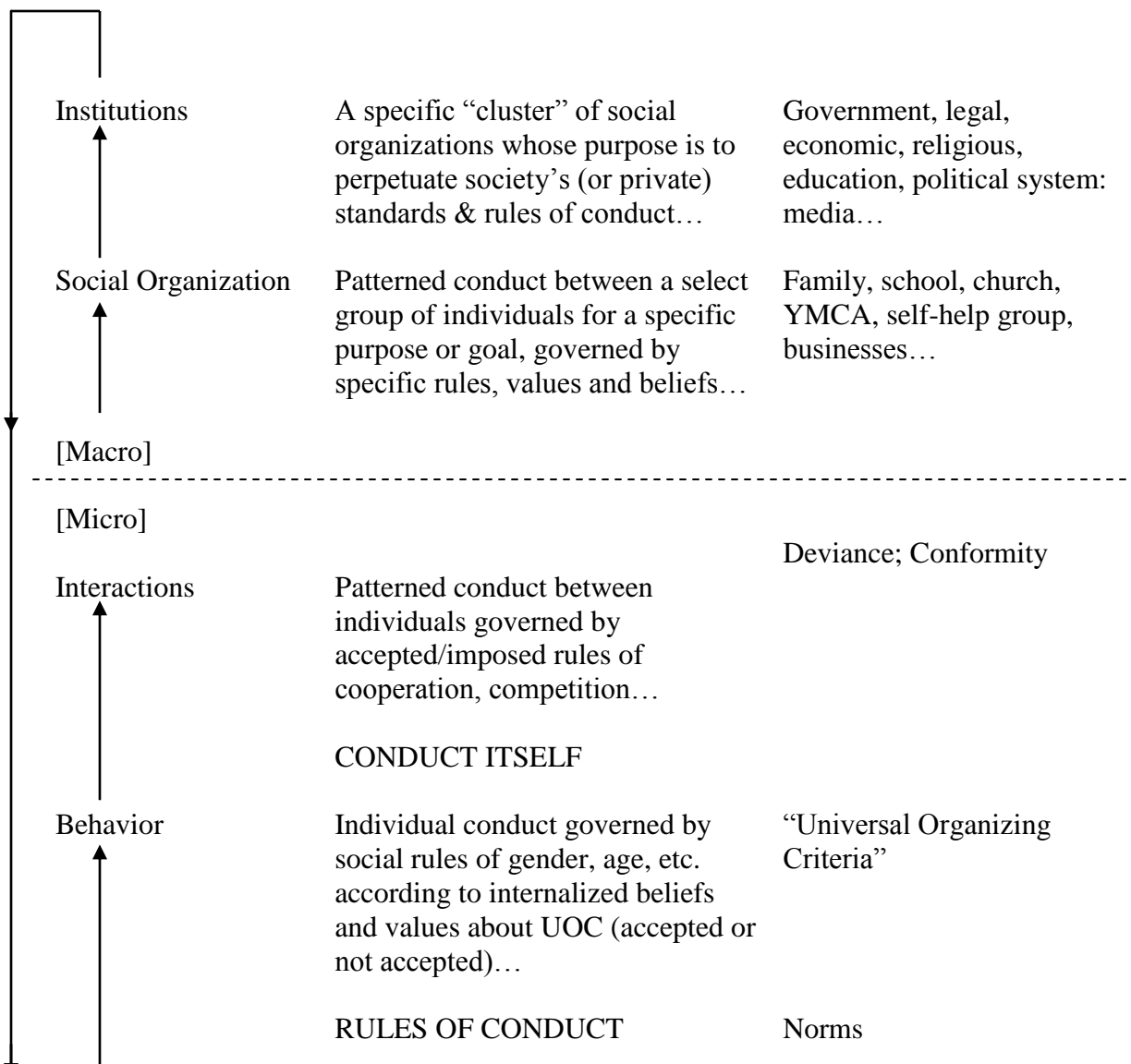
December 1, 5 – Chapter 10: race and ethnicity, fundamental human differences,
human differences, and human rights; Chapter 11: social change, societies in
transition

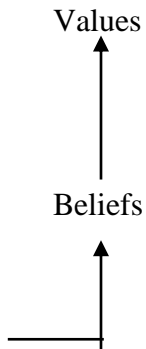
December 8 – conclusions, final exam preps

[Classes end Monday, December 8, 2014]

GENERAL SCHEME OF SOCIETY

“The Social System”





Internalized moral precepts, worth, utility...	Mores, Folkways
STANDARDS OF CONDUCT	Motivations
Internalized convictions, feelings of certainty, faith, "truth," acceptance...	Attitudes

2007 © R. Gadacz

Six Ways To Make This Course More Valuable:

- 1. Participate, to engage your learning**
- 2. Question, to enhance your learning**
- 3. Read, to expand your learning**
- 4. Reflect, to measure your learning**
- 5. Apply, to transfer your learning**
- 6. Innovate, to adapt your learning**